

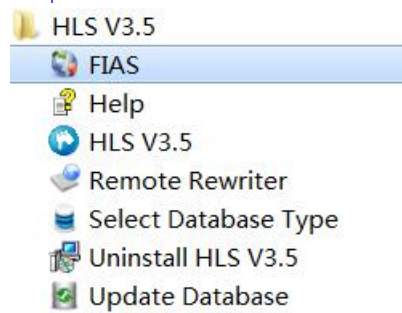
FIAS Installation and Configuration

Before install the FIAS program, please make sure your card encoder is enabled with the FIAS function, please turn to your supplier to check this feature before use.

Step 1: please install the hotel locking software first. Suggested installation folder is: D:\, please setup the basic information like building/floor/room number etc. This is to call the room No. When the Opera PMS send command to lock software.

Step 2: Please install the  **FIAS for STK 3.5 20.03.12**

Step 3: Run the FIAS under the HLS V3.5 as the photo:



1.1 There is window as below to enter the password:

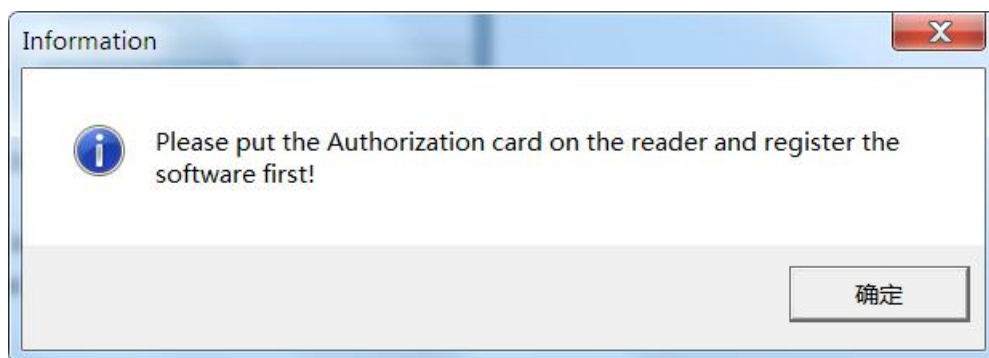


Please enter the same password like the hotel locking software and enter the Interface.

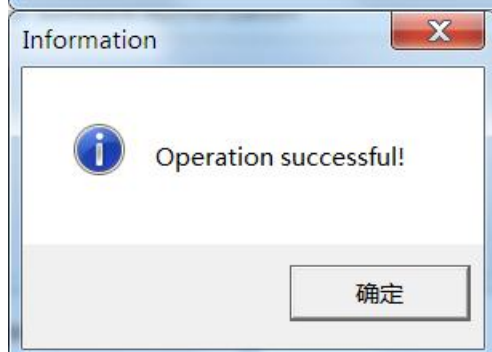
please make sure you connected the card encoder with the computer already, or there is tip with window as below:



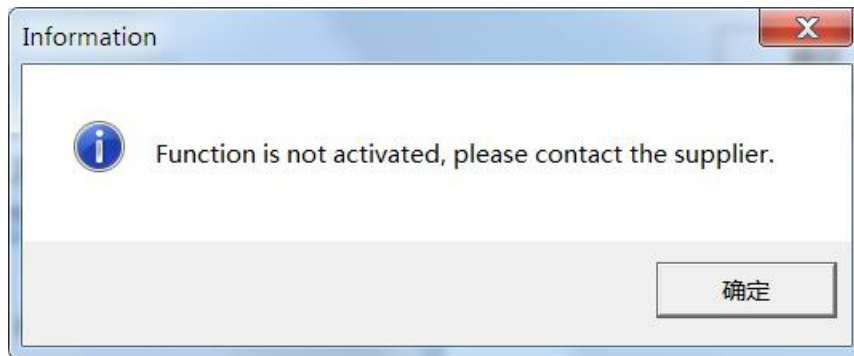
If the card encoder is connected correctly, you will see the below windows for FIAS interface:



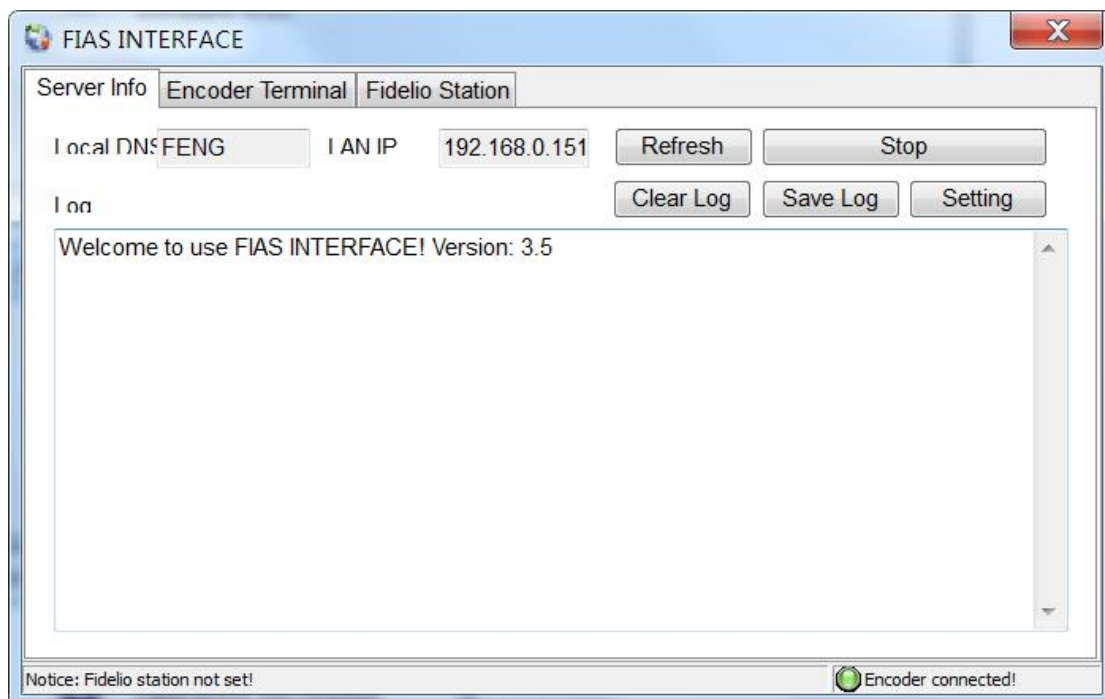
Then please put the authorization card on the encoder and click Read.



Please make sure the encoder is enabled with the FIAS function when you start to use this program, if not you will see the message as below:

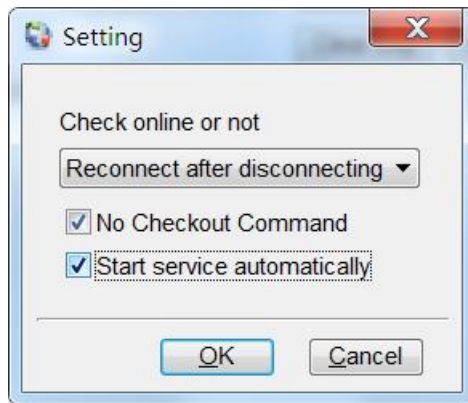


Then you shall turn to the supplier to activate the FIAS function for the card encoder.
If the encoder is enabled with FIAS function, then there is one window to show you the FIAS interface:

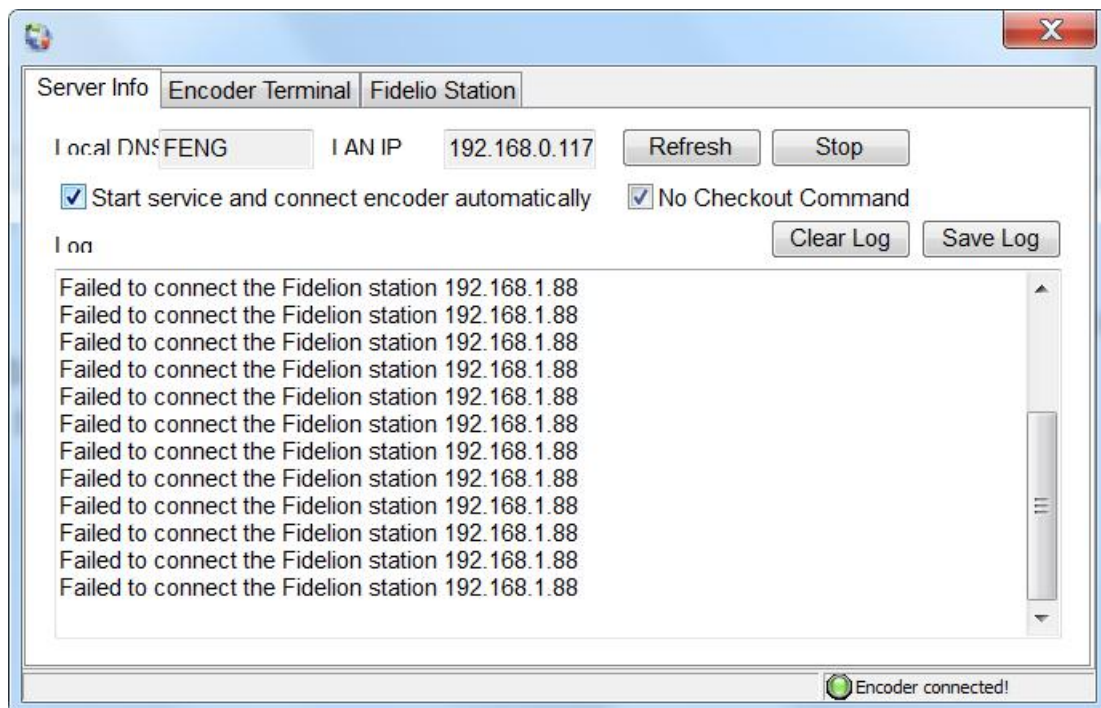


Before you start the normal operation, you can also test the locks with the encoder when it is enabled with FIAS function in the "Remote Rewriter".

Under the "Server Info" you will see the server information, we suggest ticking the function "Start service automatically" for quick login and connect the encoder terminal etc.

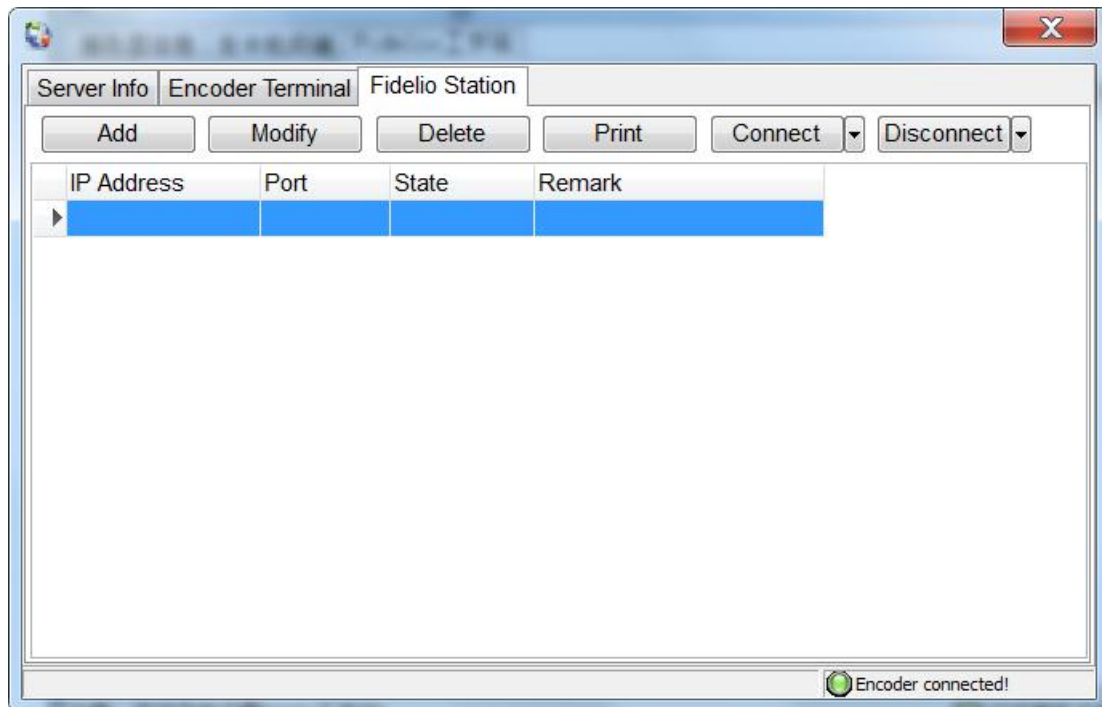


If the encoder is not connected well with the computer, there is message to show you as below:



1.2 To add the Fidelio station

click the button "Fidelio Station" and find the below window:



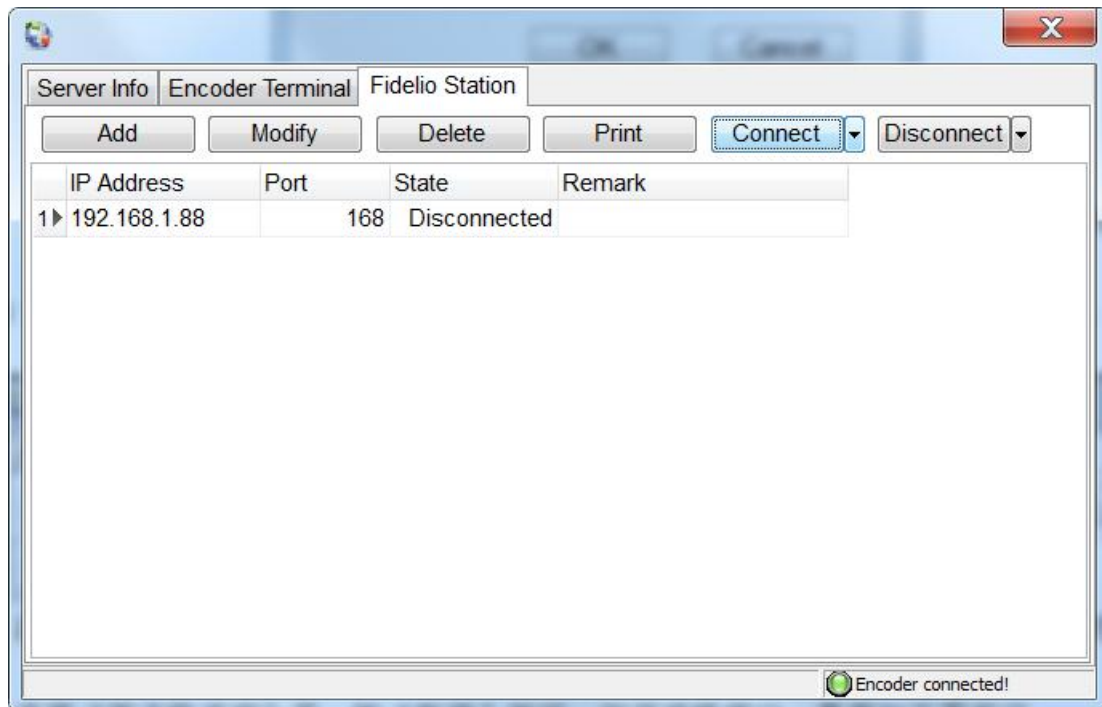
Press the "Add" button for next window:

Notice:

IP Address: this is the IP address for the computer that is running the Opera software.

Port: this is the TCP/IP communication port for the computer that is running the lock software, please turn the administrator for the port number.

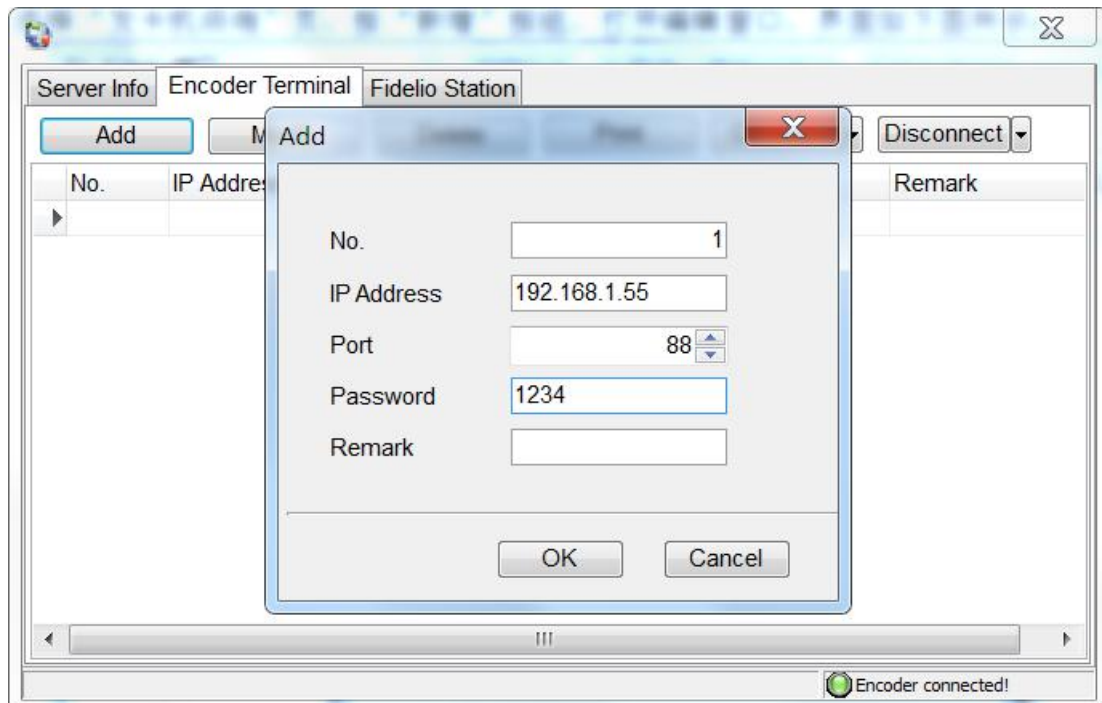
Press OK button when the port service is enabled and click "Connect" button, the system will connect with the Opera side automatically.



1.3 Add the Encoder Terminal

Encoder Terminal: this FIAS support the multi-point issuing card, you can send the issuing card command to the computers that with lock software.

Click Add button and check the window as below:



Notice:

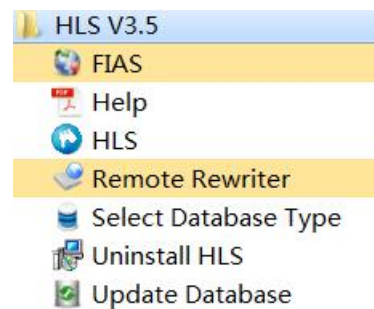
The IP address is the computer IP address which is running the lock software and connected with card encoder, if you do not know this IP, you can check the IP by the command ipconfig(Start- CMD)

Port: that is the communication port, please keep the port 88 as default.

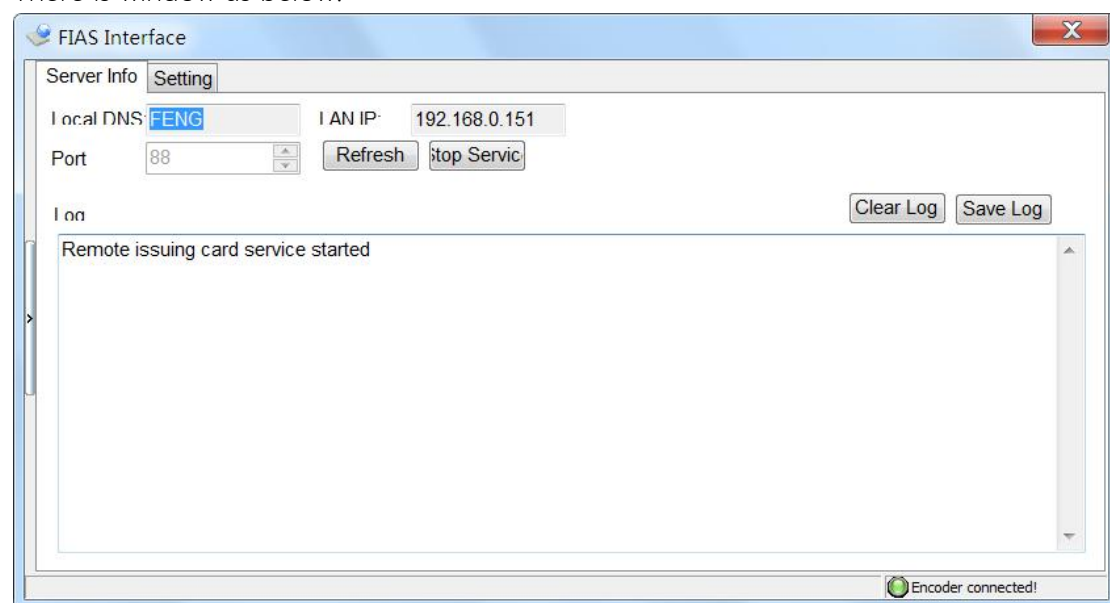
1.4 Remote Rewriter Terminal

1.4.1 Please run the remote writer on other computer that is installed with lock software.

Click the Remote Rewriter under the HLSV3.5 from the Start as the below:

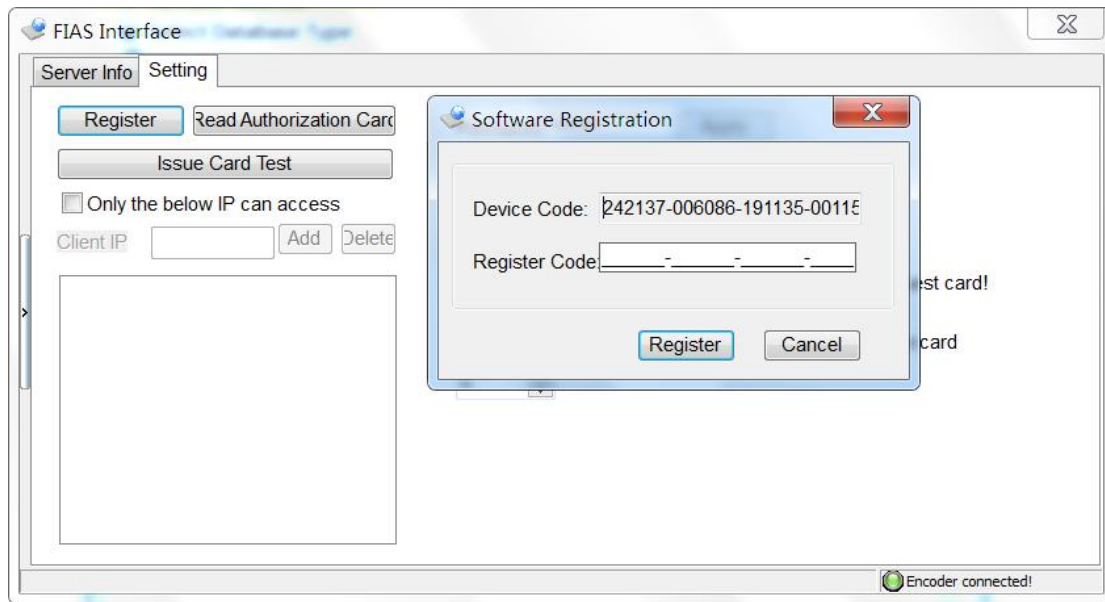


There is window as below:

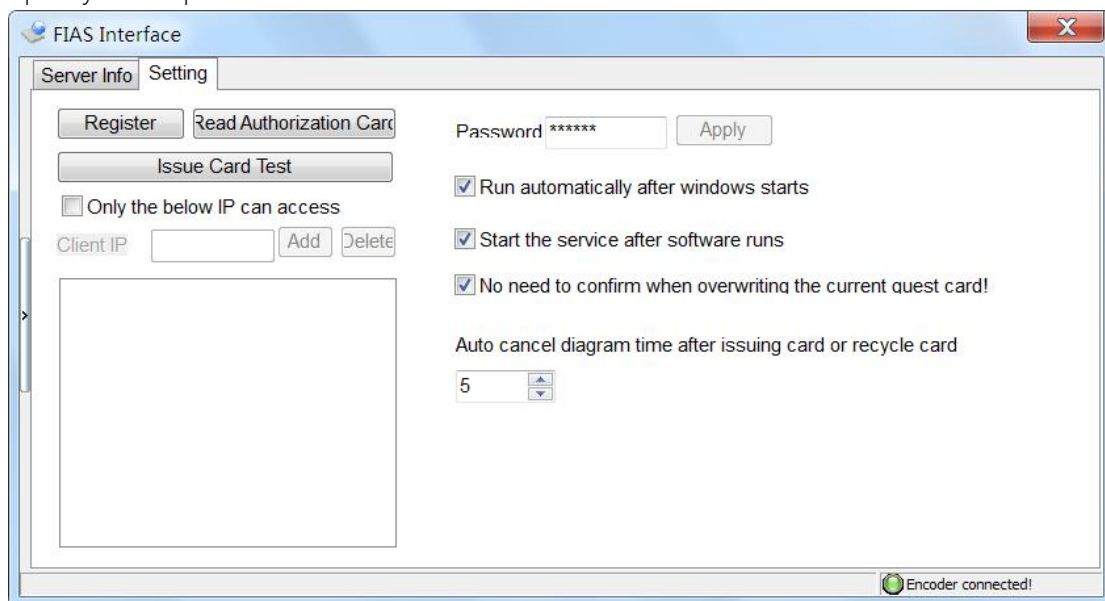


Also you can check the setting option to check the encoder information, if it is not enabled, you can send the device code to the supplier and get right register code to activate the FIAS function.

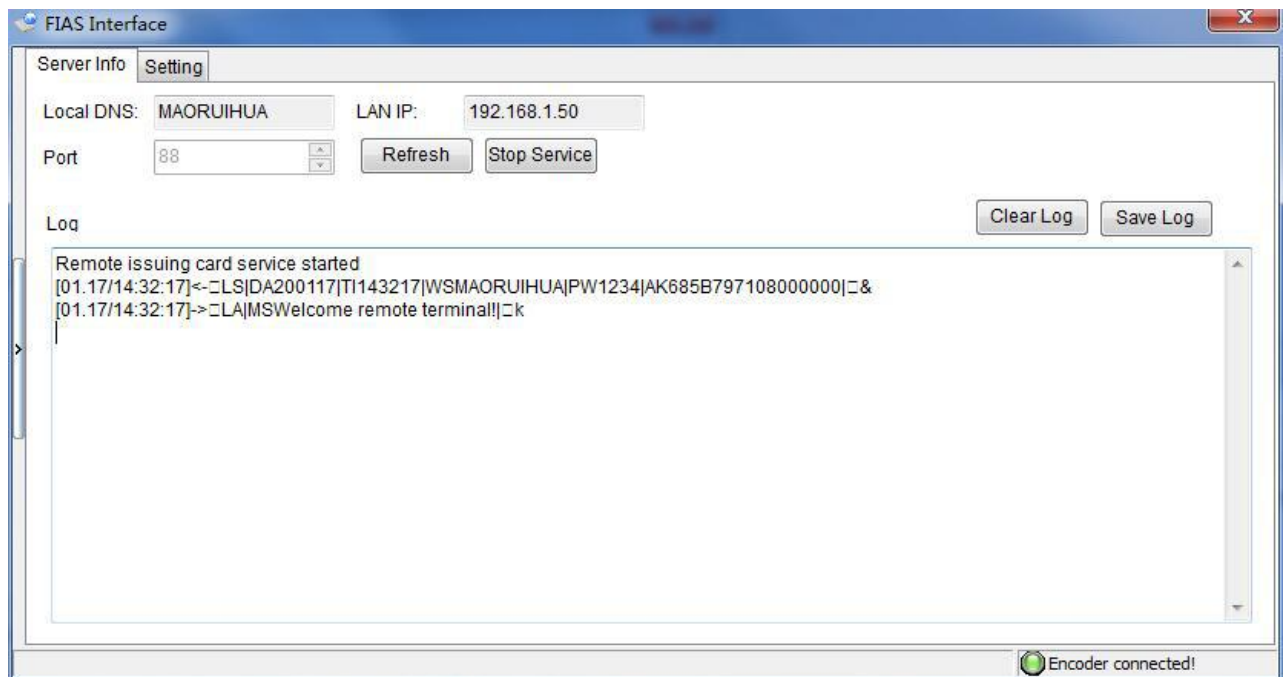
And you can also issue card to test the encoder with the blank cards.



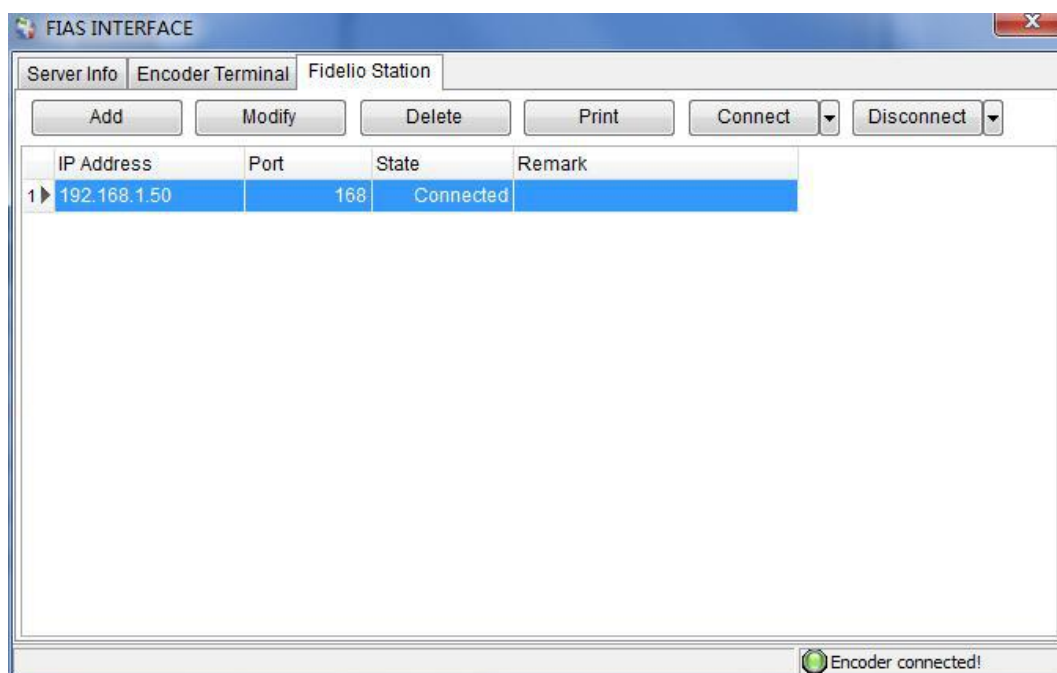
For other special function or password and accessible IP address etc, you can choose upon your requirement.



1.4.2 The lock software will connect with the issuing card terminal automatically, if it is successful, there is one window as below.



1.4.3 The state under the encoder terminal and Fidelio Station will show "Connected".



1.4.4 After the setting is finished, you can receive the command from the Opera side and issue the card with the FIAS interface as the below:

FIAS INTERFACE

Server Info Encoder Terminal Fidelio Station

Local DNS MAORUIHUA LAN IP 192.168.1.50 Refresh Stop

☒ Start service and connect encoder automatically ☒ No Checkout Command

Log Clear Log Save Log

```
Welcome to use FIAS INTERFACE! Version: 3.5
Succed to add encoder terminal: 192.168.1.50
[01.17/11:21:53]<->LS|DA200117|TI112153|WSMAORUIHUA|PW1234|AK685B797108000000|<~
[01.17/11:21:53]-><LA|MSWelcome remote terminal!<~k
Issuing Terminal 192.168.1.50 Connected
Successfully added Fidelio station: 192.168.1.50
[01.17/11:22:02]<->LS|DA200117|TI112201|<~
[01.17/11:22:02]-><~
[01.17/11:22:02]-><LD|DA200117|TI112202|V#3.50|FDL|<~
[01.17/11:22:02]<->~
[01.17/11:22:02]-><LR|RIKR|FLKCKTRNWSDTGAGDGGKOGN|<~
[01.17/11:22:02]<->~
[01.17/11:22:02]-><LR|RIKA|FLASKCWSCT$3|<~d
[01.17/11:22:02]<->~
[01.17/11:22:02]-><LR|RIKZ|FLASCTKCRNWSGDDTKOGN|<~
```

Encoder connected!